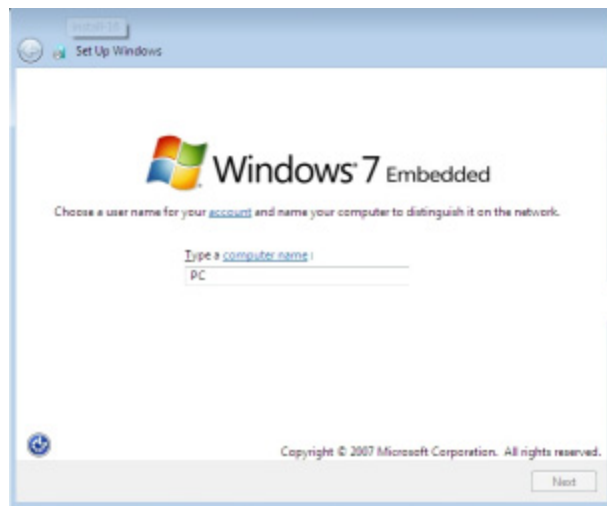




# Windows 7 Embedded Standard

## Setup Guide

Upon first boot, the Windows 7 embedded thin client will boot to the screen as seen below:



Enter a computer name for the thin client. The “computer name” is the same as if you were to name your PC in My Computer -> Properties. This is a required step.

The image has two default users pre configured -

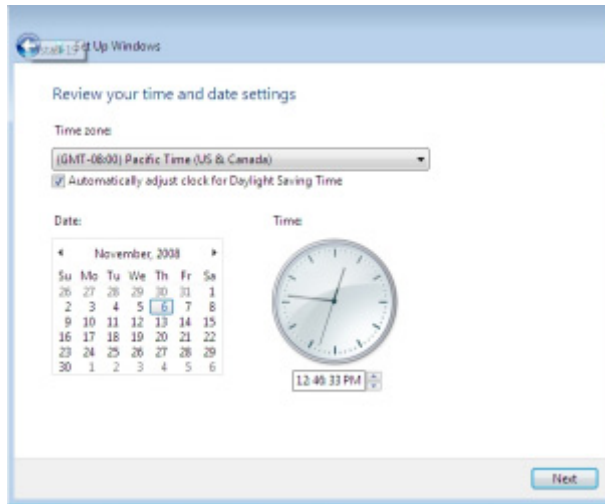
- User “Administrator” - password “admin”
- User “ThinClientUser” - password “ThinClientUser”

NOTE: The “ThinClientUser” password is set to expire after 42 days, see page 5 for instructions on changing the expiration parameters.

Select Next

The next screen presented is to set Time Zone, Date and Time.

Please set each to your match your current date and time settings.



Select Next

The Windows 7 Embedded thin client will continue the setup process.





Once the initial configuration process has completed, the Windows 7 Embedded Standard thin client will have automatically logged on as user “ThinClientUser”. You may now add third party applications if desired. When setup is complete, enable Write Protection.

**NOTE:** To add third party applications always make certain Write Protection is Disabled prior to installing application. Once the application has been installed and is working properly you may Enable Write Protection once again.

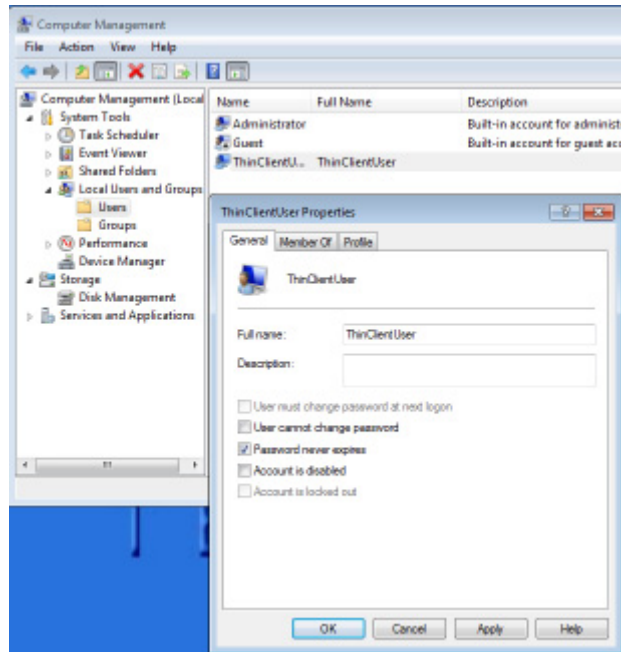
### **Change Password to Never Expires**

Select Start -right click on My Computer - Select Manage

Select Local Users and Groups

Select the Users Folder

Double click on the user - check Password never expires and select OK

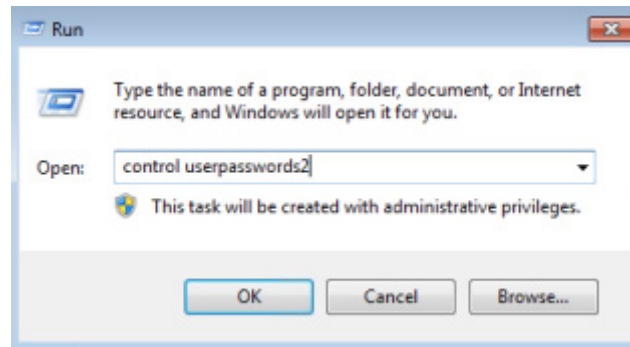


Remember to commit changes in EWF

## Change auto login options

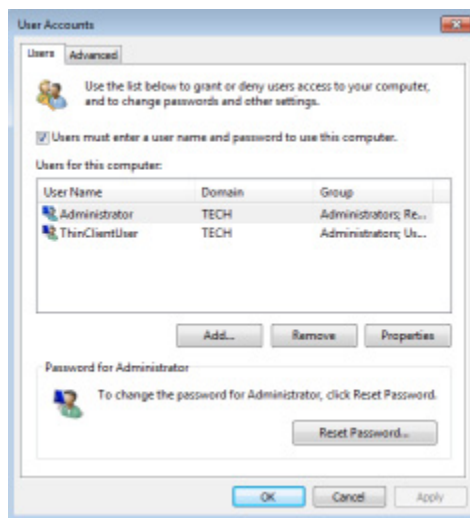
NOTE: Once you join a server to a domain, Windows will automatically delete the **AutoAdminLogon** value from the **HKLM\SOFTWARE\Microsoft\Windows NT\CurrentVersion\Winlogon** registry key. This causes the userpasswords2 control to hide the "Users must enter a user name and password to use this computer" check box.

Select Start - Run and type control userpasswords2 - select OK



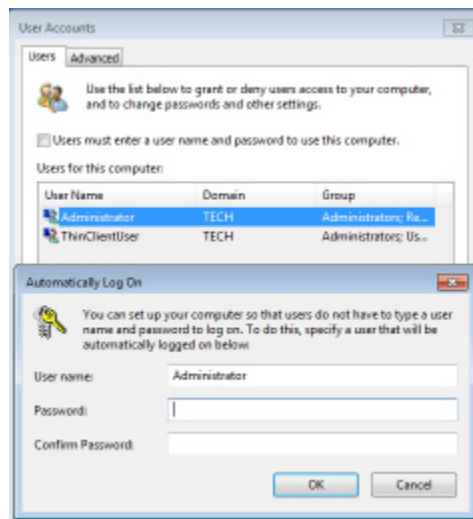
## Auto Log On

Check the “Users must enter a user name and password to use this computer” then select Apply.



Uncheck the “Users must enter a user name and password to use this computer” then Select Apply.

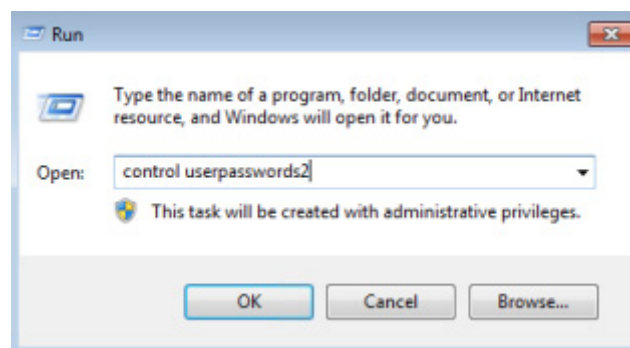
The Automatically Log On box is presented. Enter the user name and password of the account to auto log on. Select OK.



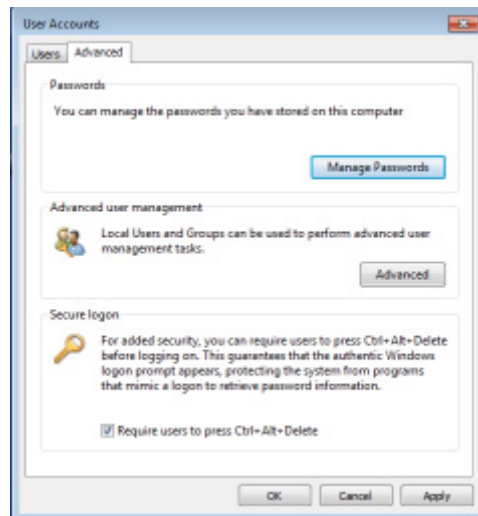
## Disable Auto Log On

To disable the auto log on just once again check the “Users must enter a user name and password to use this computer”.

Force Users to press CTRL+ALT+DEL to Log On

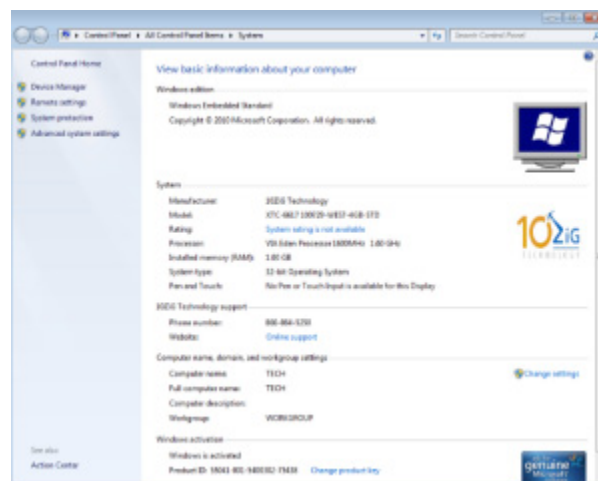


Go the Advanced Tab and check “Require users to press Ctrl+Alt+Delete” and select Apply or OK



## Joining the thin client to a domain

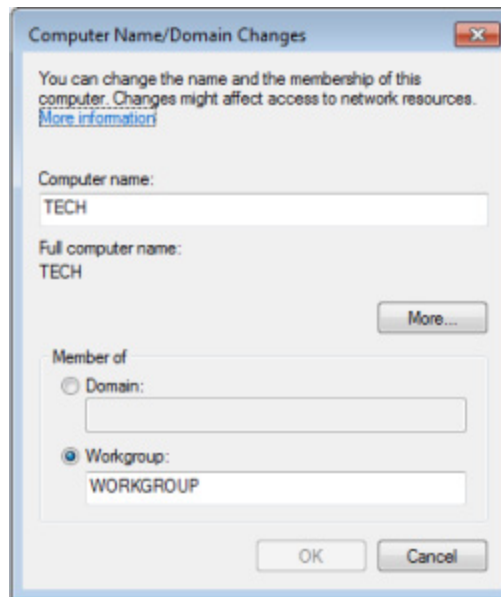
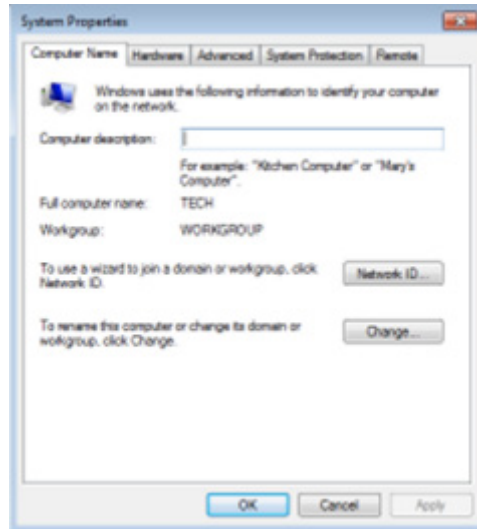
Right click on my computer and select **Properties**



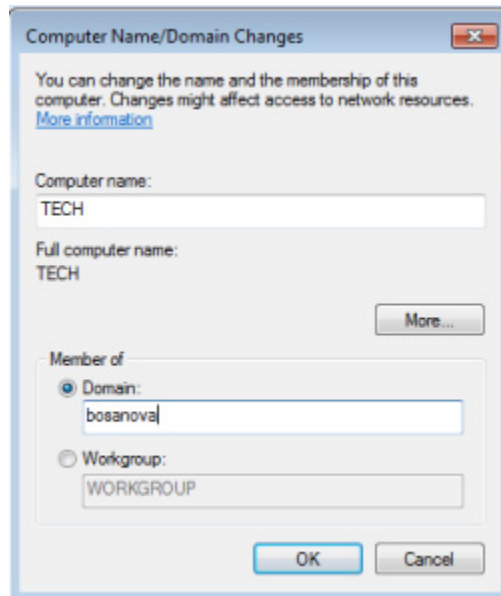
Select Change Settings



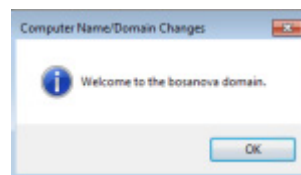
Select Change

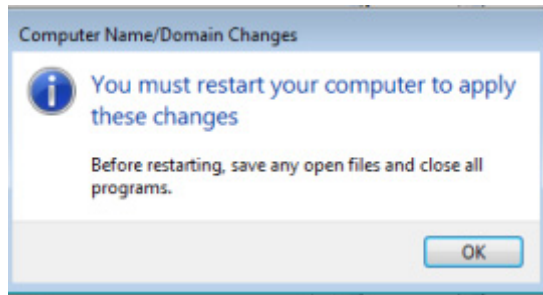


Click on Member of Domain and complete the domain name. You may change the Computer name at the same time if you desire.



Log in with a user account that has permission to join the domain.





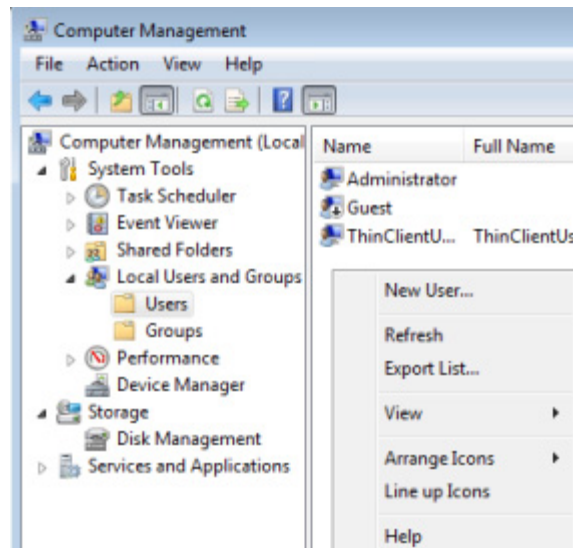
**NOTE:** Commit changes prior to rebooting or your changes will be lost.

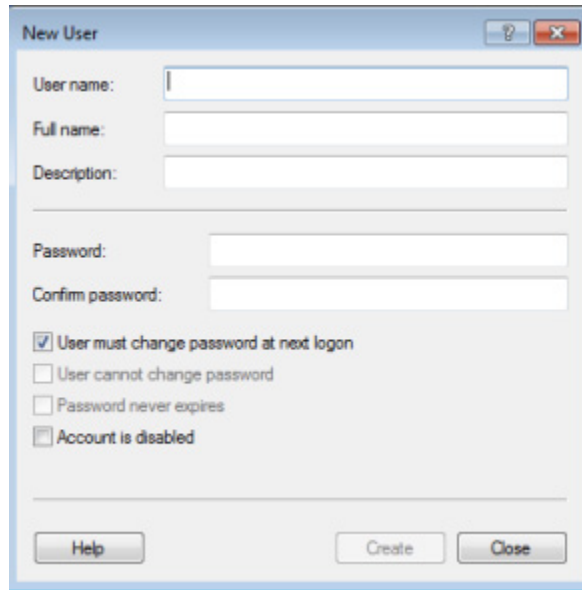
## Add Users

### Add a local user

Right click on My Computer and select Manage

Select the Users folder - right click and select New User

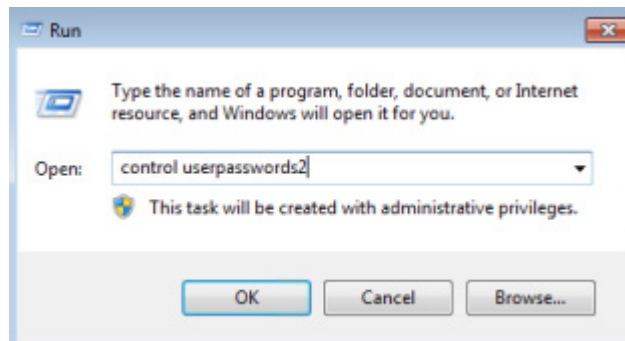


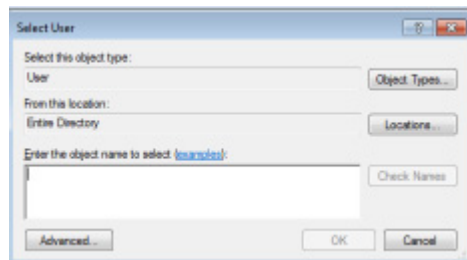
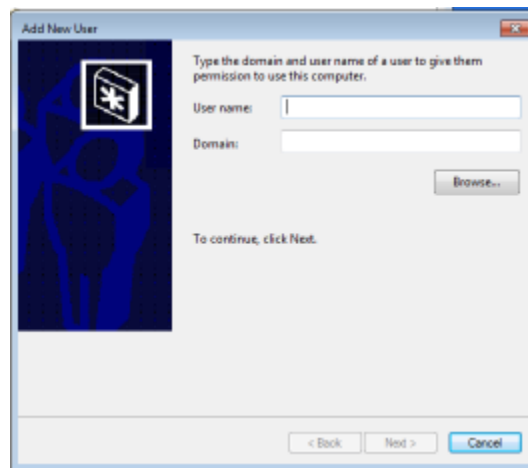
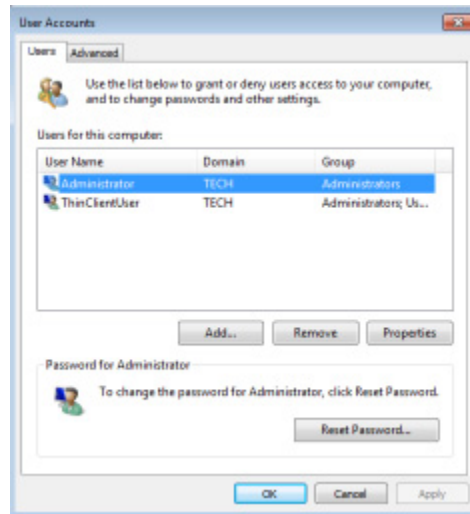


To add a user to a group select Groups - double click on the group and add the user.

### Add a domain user

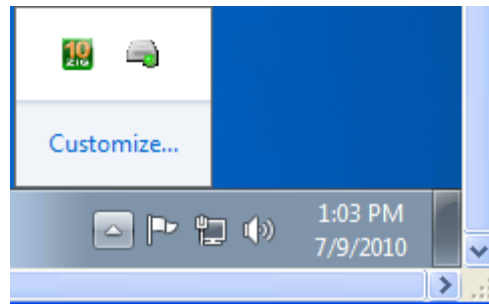
The thin client must be added to the domain first. Go to Start - Run



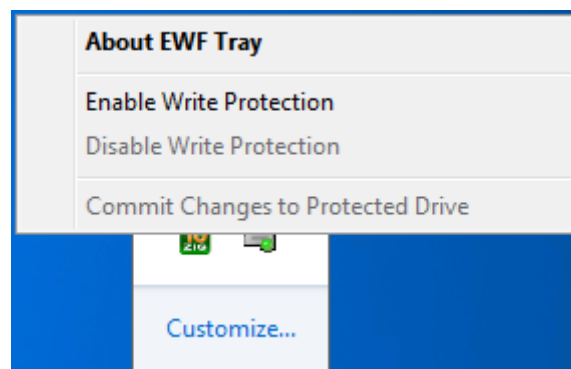


**NOTE:** If Write Protection is on make certain you COMMIT changes or they will be lost.

Click on the arrow in the right hand corner of the display



Right click on the Disk ICON with the green dot.



Select **Enable Write Protection**.

Reboot thin client.

## Write Protection (EWF) Options

If **Enable Write Protection** is grayed out, write protection is disabled and everything is being written to disk.

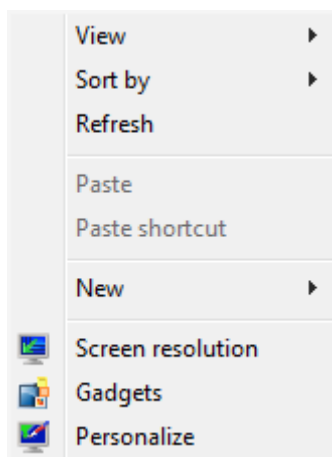
If **Disable Write Protection** is grayed out, write protection is enabled and all changes to the image must be committed to write them to disk.

When Write Protection is enabled, select **Commit Changes to Protected Drive** to write the changes to disk.

After making changes you may be prompted to reboot.

**NOTE: Windows Aero** is the graphical user interface and the default theme in most editions of Windows Vista and Windows 7 operating systems released by Microsoft. This user interface is very resource intensive. In the case of virtual memory errors, to reduce the use of resources, change the desktop theme to the **10ZiG Technology** theme which does not use Windows Aero. Right click on the desktop and go to personalize - set the theme to 10ZiG Technology.

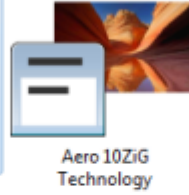
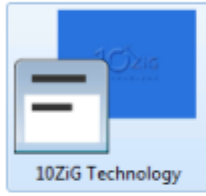
**NOTE:** If using dual monitors (VGA and DVI) you will need to change the desktop theme to a non Aero theme or the monitors will flash on and off.



## Change the visuals and sounds on your computer

Click a theme to change the desktop background, window color, sounds, and screen saver.

### My Themes (2)



### Aero Themes (6)



Windows 7



Architecture



Characters

### Basic and High Contrast Themes (6)

Remember to **commit changes** if Write Protection is Enabled.



**10ZiG Technology Limited**

**Headquarters US**

23309 N 17th Dr - Ste 100  
Phoenix, AZ 85027  
Phone 866-864-5250 • Fax 623-516-8697  
support@10zig.com  
sales@10zig.com  
www.10zig.com

**Headquarters UK**

10 ZiG Technology Limited  
Action Business Centre  
Swan Street  
Leicester LE3 5AT  
Phone 44 1509 276252 • Fax 44 1509 276253  
support@10zig.eu  
sales@10zig.eu  
www.10zig.eu

August 25, 2010